

Manual Completion Machine

Product Description

Completion Machine is used to fix LOR Plug into LOR Flange for sealing after Line Stop operation to ensure reuse of Sandwich Valve to save the cost.



XD800



XD400

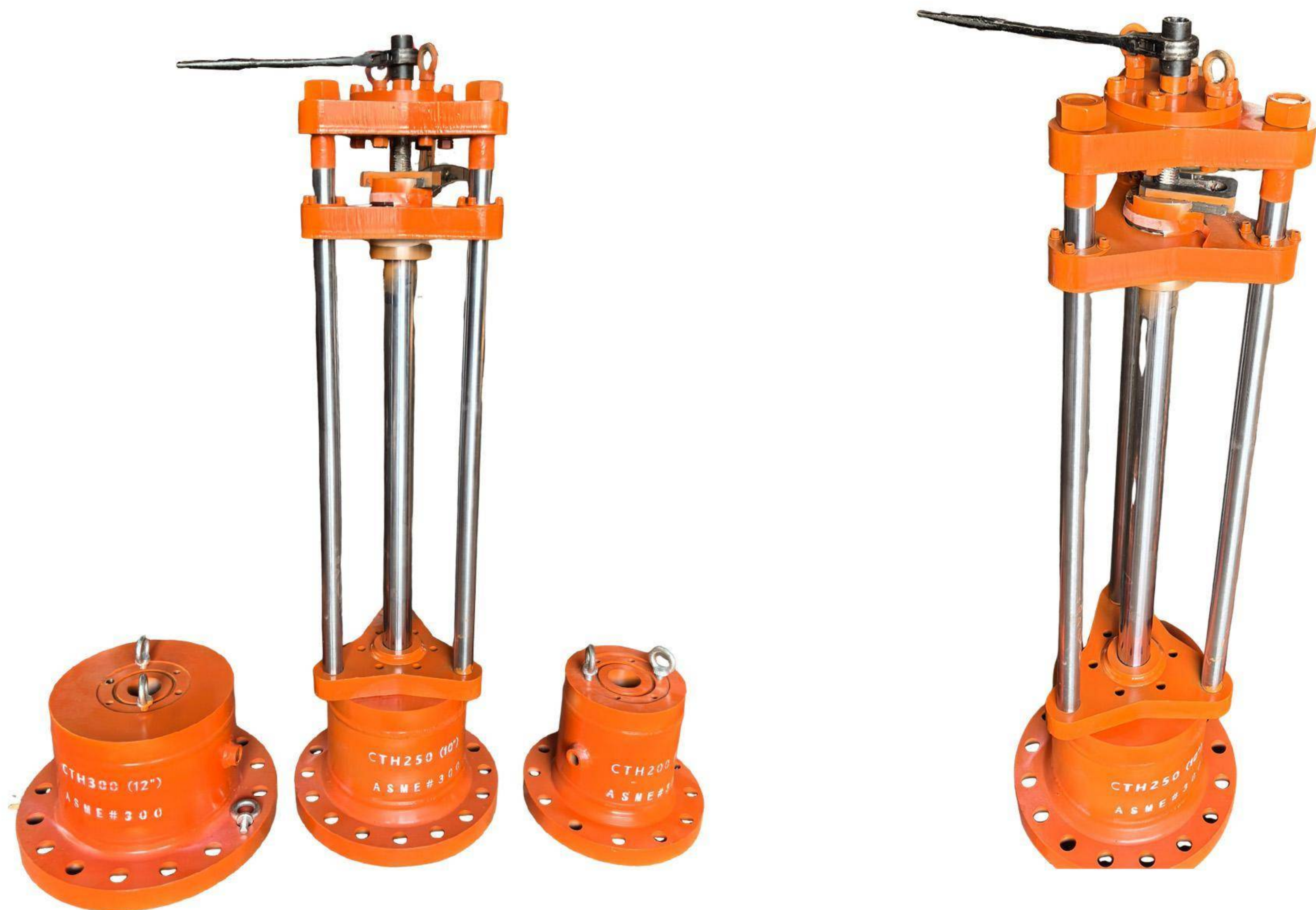
Equipment parameters

Model	GW-XD400	GW-XD800	GW-XD2000
Completion Range	100-400mm	350-800mm	700-2000mm
	4"-16"	14"-32"	28"-80"
Design Pressure	6.4/10Mpa	6.4/10Mpa	6.4/10Mpa
Spindle Travel	640	1300	1800
Drive Mode	Manual		
Feed Mode	Manual		
Spindle Diameter	80mm	120mm	140mm

Manual Completion Machine(for TDW)

Product Description

Completion Machine is used to fix LOR Plug into LOR Flange for sealing after Line Stop operation to ensure reuse of Sandwich Valve to save the cost.



Equipment parameters

Model	GW-XD400	GW-XD800	GW-XD2000
Completion Range	100-400mm	350-800mm	700-2000mm
	4"-16"	14"-32"	28"-80"
Design Pressure	6.4/10Mpa	6.4/10Mpa	6.4/10Mpa
Spindle Travel	640	1300	1800
Drive Mode	Manual		
Feed Mode	Manual		
Spindle Diameter	80mm	120mm	140mm

Completion Housing



DN150



DN200



DN250



DN300

Operation Demonstration



Hydraulic Hot Tapping Machine

Product Description:

- 1.High Pressure Hydraulic Hot Tapping Machine is designed to making connections to pipelines or tanks without service shutdown or interruptions.
- 2.It's widely used for pipeline emergency repair,attach branch connection, pipeline reconstruction and etc.
- 3.The machine is suit for flam mable,explosive Crude Oil、 Natural Gas、 LNG、 Chemical、 Coal Gas、 Urban Water、 Supply, Heat Supply Pipeline Hot Tap and Line Stop.



Hydraulic Hot Tapping Machine



Equipment parameters

Model	GW-K300	GW-K400	GW-K500	GW-K800	GW-K1000
Hot Tapping Range	6"-16"	12"28"	20"-48"	32"-72"	32"-120"
	150-400mm	300-700mm	500-1200mm	800-1800mm	800-3000mm
Working Pressure	20, 50, 100, 300 bar / ANSI#150, 300, 600, 900				
Boring Bar Travel	50"	74"	74"	90"/120"	90"/120"
	1250mm	1850mm	1850mm	2250/3000mm	2250/3000mm
Drive Mode	Hydraulic				
Feed Mode	Automatic / Manual				
Boring Bar Diameter	60mm	80/90mm	100mm	160mm	160/200mm
Housing Flange Size	200mm	400mm	400mm	400mm	400mm

NOTE:

- 1. The maximum working pressure is 100 bar for hot tapping size above DN500mm (20").
- 2. The maximum working pressure is 300 bar for hot tapping size below DN500mm (20").

Hydraulic Hot Tapping Machine

product photos



GW-K300



GW-K300



GW-K500



GW-K500

Type of Hdraulic Drive of Hydraulic Hot Tapping Machine

The traditional Hydraulic Hot Tapping Machine features a rear-mounted hydraulic power head.

While the improved model of Hydraulic Hot Tapping Machine adopts a front-mounted hydraulic power head.

This modification design lowers the machine's center of gravity, helping to enhance stability and reduce vibration during hot tapping operation.



Rear Hydraulic Drive



Front Hydraulic Drive



Hydraulic Power Head

Hydraulic Hot Tapping Machine

Accessories of Hot Tapping Equipment



Hot Tapping Cutter



Pilot Drill



Tapping Housing



Hydraulic Power Pack

Hydraulic Hot Tapping Machine

Function Test of Hot Tapping Equipment in our workshop



100% Function Test and Pressure Test to each set of Hot Tapping Equipment before delivery .

Hydraulic Hot Tapping Machine

Project Case



Electric Hot Tapping Machine with EX motor



Product Description:

1. Electric Hot Tapping Machine is designed to making connections to pipeline or tanks without service shutdown or interruptions.
2. The machine is suit for flammable, explosive Crude Oil, Natural Gas, LNG, Chemical.



Electric Hot Tapping Machine with EX motor

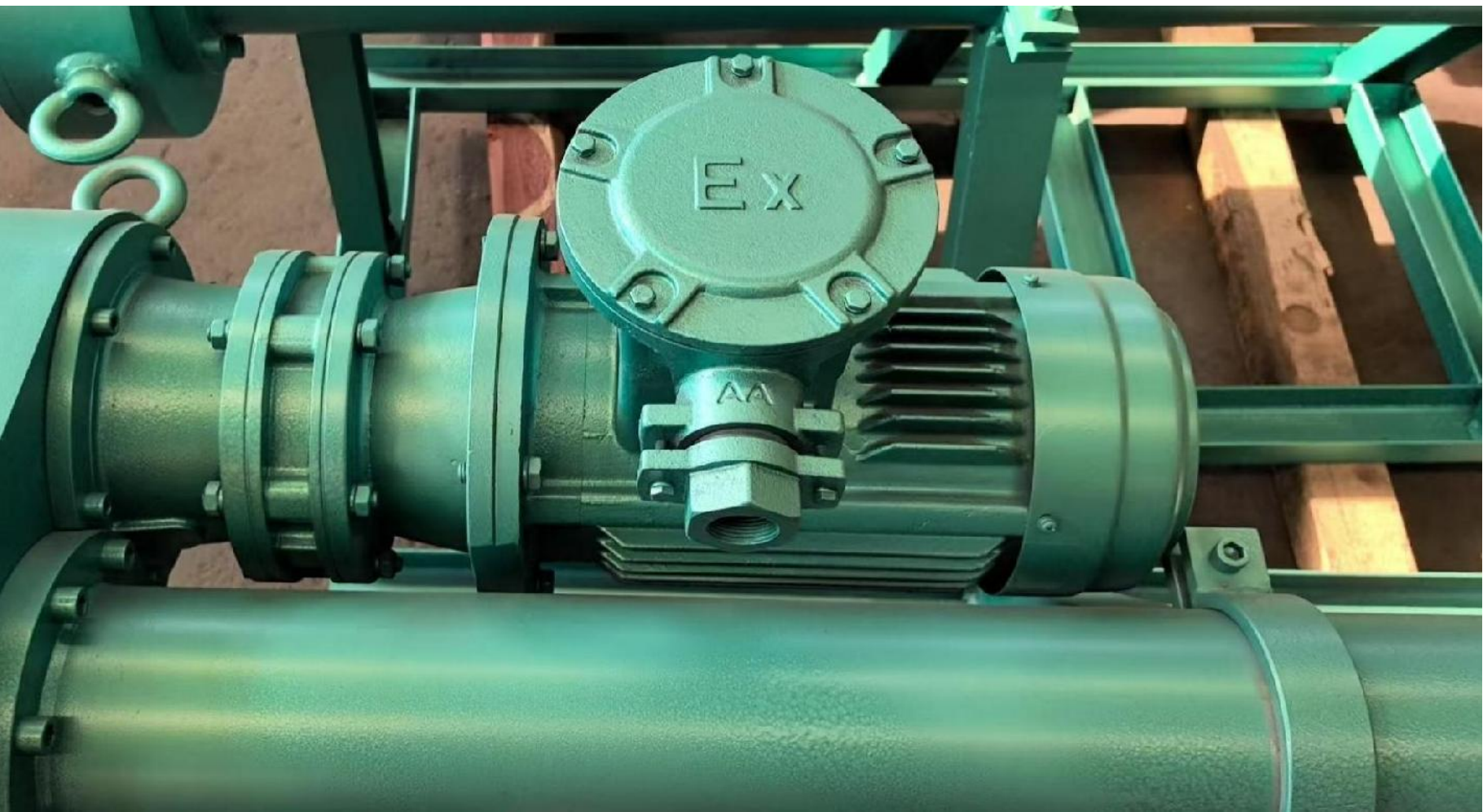
Equipment Parameters

Model	GW-K200-E	GW-K300-E	GW-K700-E
Hot Tapping Range	2-1/2"-8"	6"-16"	12"-28"
	65-200mm	150-400mm	300-700mm
Pressure Ratings	16bar, 25bar, 40 bar, 63bar, 100bar, 300bar		
Boring Bar Travel	30"	50"	74"
	750mm	1250mm	1850mm
Drive Mode	Electric		
Feed Mode	Automatic / Manual		
Boring Bar Diameter	40mm	60mm	80/90mm

Product Features:



High Pressure Resistant
Max Working Pressure up to 300bar



Drived by Explosive-Proof Motor

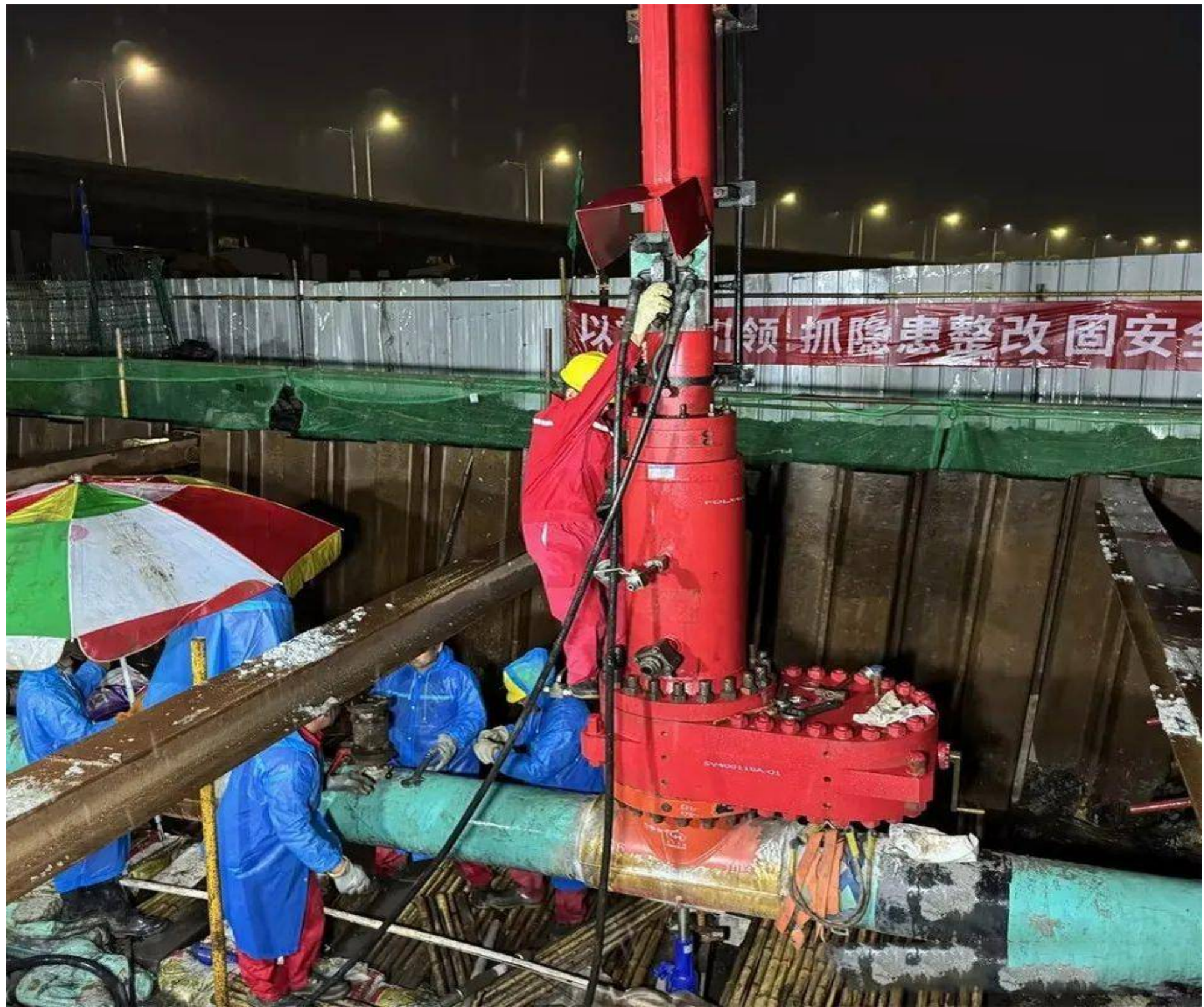


Feed Volume Visible from this hole



Manual Mode / Automatic Mode

Project Cases



16" crude oil pipeline line stop



20" crude oil pipeline line stop



12" oil pipeline single line stop

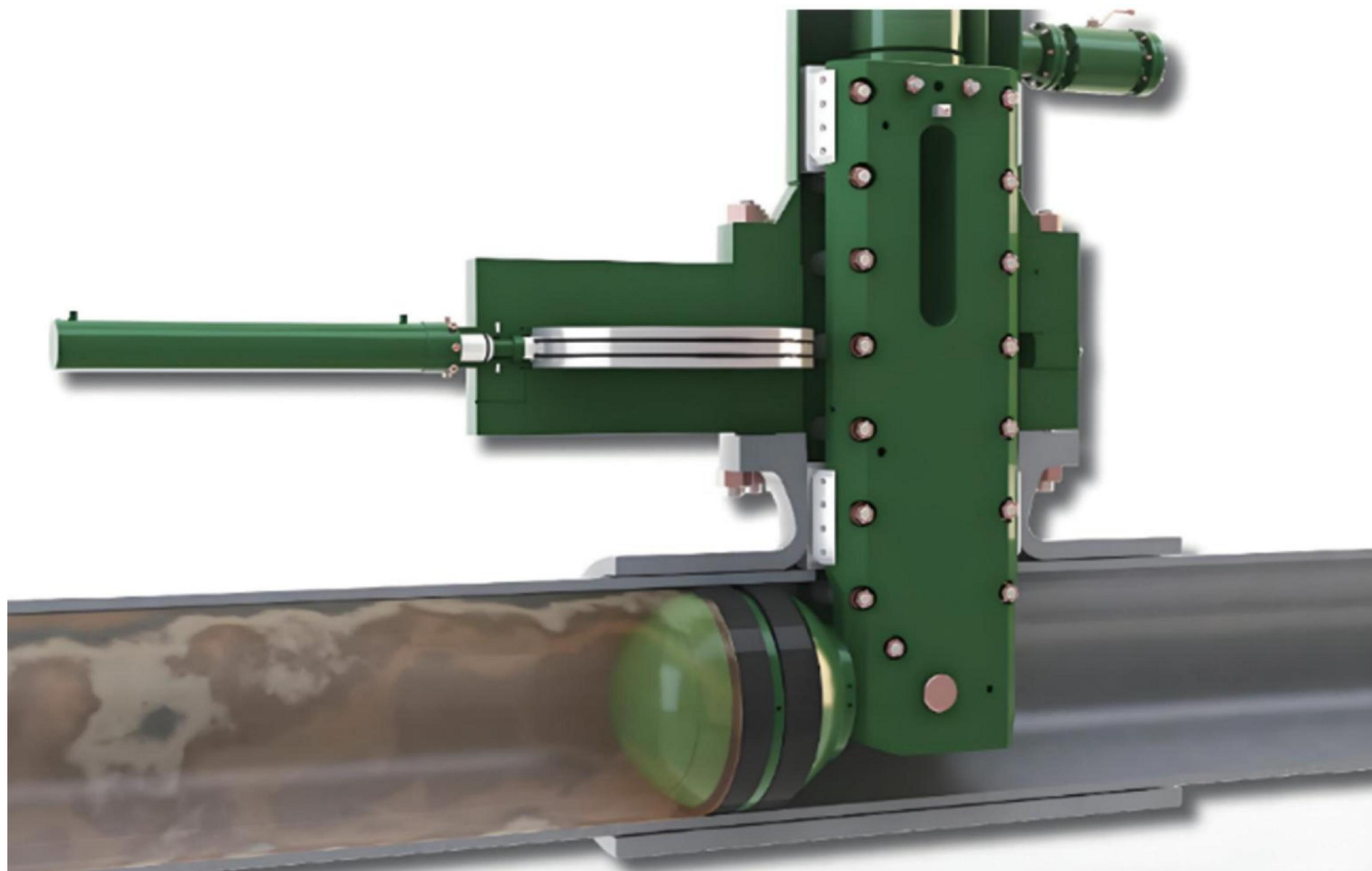


20" pipeline line stop

Spherical Dual Seal Plug (BISEP)

Product Description:

Great Wall brand Spherical Dual Seal Plug(BISEP) provides a fail-safe double block and bleed isolation deployed through a single full bore hot tap intervention, without the need for additional hot tapped bleed or vent ports. The Spherical Dual Seal Plug offers significant safety advantages over traditional line stop technologies, with the hydraulically activated dual seals providing leak-tight isolation of live, pressurised pipelines.



Spherical Dual Seal Plug (BISEP)

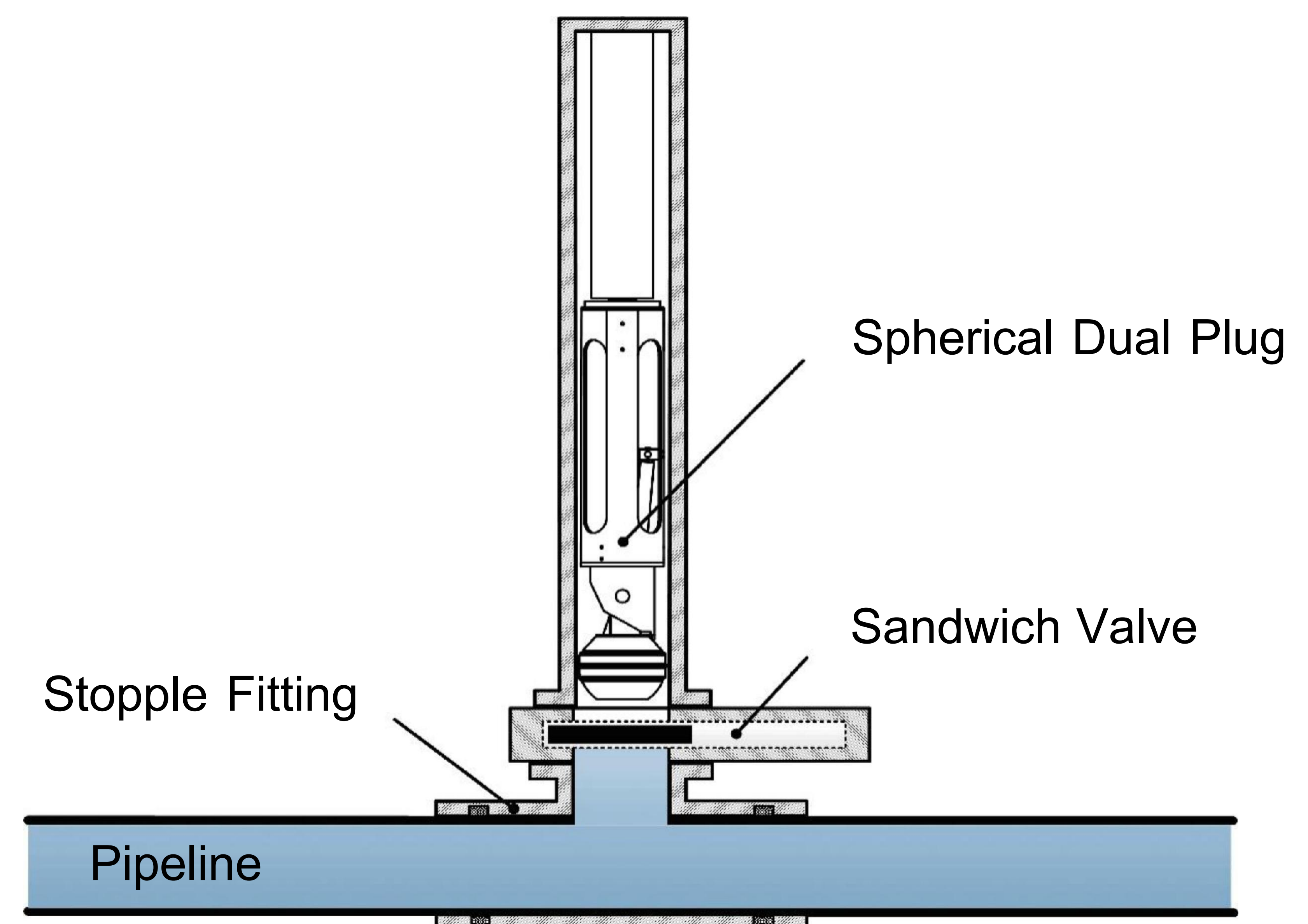
This high integrity isolation is provided by a spherical dual seal plug which is deployed into pipeline by Hydraulic Line Stop Machine (Line Stop Actuator).

The Dual Seals are hydraulically compressed resulting in radial expansion for active temporary line plugging.

The compression of Dual Seals is actuated by hydraulic cylinder inside of Spherical Dual Seal Plug.

The hydraulic cylinder of plug is controlled by Electromagnetic Valve which will be integrated into Hydraulic Power Pack Unit.

The machine operation and sealing status is monitored in real-time through sensors and displayed digitally on the computer screen.



Spherical Dual Seal Plug (BISEP)

The line pressure acting against the Spherical Dual Seal Plug offers a fail-safe feature by providing actuation independent of the hydraulic system.



国内首次应用球形封堵器
两项“拳头”技术双映成辉

Spherical Dual Seal Plug (BISEP)

List of Sizes of Spherical Dual Seal Plug

S/N	Size 规格		Pressure Rating		Pressure Rating	
	mm	inch	ANSI#	bar	ANSI#	bar
1	400	16	# 600	100	#900	150
2	450	18	# 600	100	#900	150
3	500	20	# 600	100	#900	150
4	550	22	# 600	100	#900	150
5	600	24	# 600	100	#900	150
6	700	28	# 600	100	#900	150
7	800	32	# 600	100	#900	150
8	900	36	# 600	100	#900	150
9	1000	40	# 600	100	#900	150

The Spherical Dual Seal Plug is designed to resist back pressure and therefore can also be used as a test boundary for pipeline reinstatement testing. Uniquely the Spherical Dual Seal Plug is designed to take 50% of its design pressure in the reverse direction.